

Supplementary Data

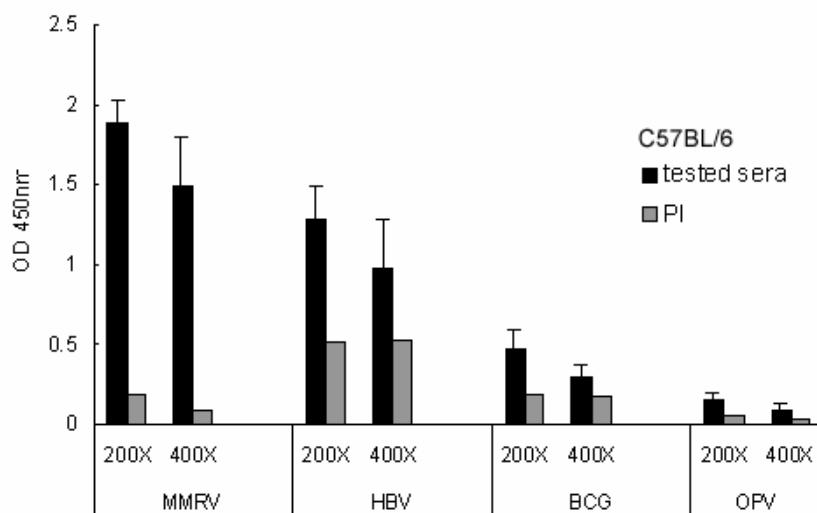


Figure 1: Determination of immune responses generated from children's vaccines.

To determine the viabilities of the children's vaccines used in this study, several vaccines were used to evaluate their ability to generate specific antibodies in mice. After the 2nd immunization, sera were collected and detected by ELISA assays. The results show that these vaccines are able to generate specific antibodies against their respective antigens.