

Short Technical Note:

Analysis of microsatellite instability in colorectal carcinoma by microfluidic-based chip electrophoresis

Margarete Odenthal^{1,3}, Nora Barta¹, Daniela Lohfink¹, Uta Drebber¹, Falko Schulze¹, Hans Peter Dienes¹, and Stephan E. Baldus²

¹Institute of Pathology, University Hospital of Cologne, Germany and ²Institute of Pathology, University of Duesseldorf, Germany

³Address of correspondence: Margarete Odenthal
Institute of Pathology
University Clinic of Cologne
Kerpener Str. 62
50924 Cologne, Germany
Tel: 0049 (0) 221 478 6367
Fax: 0049 (0) 221 478 6360
Mail: m.odenthal@uni-koeln.de

The corresponding author does grant on behalf of all authors, who are employees of the University Hospital Cologne or Duesseldorf, respectively, a non exclusive license on a worldwide basis to the BMJ Publishing Group Ltd and its licensees to permit this article to be published in JCP and any other BMJPGJ products to exploit all subsidiary rights.

Key words: microsatellite instability, microfluidics, on-chip electrophoresis

Abstract

Microsatellite analysis is an important tool in clinical research and molecular diagnostics, because microsatellite instability (MSI) occurs frequently in various types of cancer. Approximately 10-15% of colorectal, gastric or endometrial carcinomas are associated with MSI, which has an impact on clinical prognosis.

The microsatellite loci Bat25, Bat26, D2S123, D5S346, and D17S250, recommended by the Bethesda guidelines, were analysed by microfluidic-based on-chip electrophoresis in 40 cases of colon carcinoma with known MSI status. In all cases, microfluidic separation of the PCR amplicons resulted in highly resolved, distinct patterns of each of the five microsatellite loci. Detection of MSI could be demonstrated by microsatellite loci-associated, well-defined deviations in the electropherogram profiles of tumour and non-tumour material and confirmed the classification of MSI cases performed by conventional technology.

In conclusion, microfluidic chip technology is a simple and reliable approach for MSI detection, which allows label-free and very fast analysis of microsatellite amplicons.

Introduction

In 10 to 20% of patients with colorectal cancer (CRC), carcinogenesis is due to genomic defects in the mismatch repair machinery. Defective DNA repair as a result of germ-line mutations has been linked not only to sporadic colorectal carcinoma but also to those carcinomas arising in the hereditary non-polyposis colorectal carcinoma syndrome (HNPCC). In both settings, the mutations and promoter hypomethylation occur mainly in the genes *hMLH1* and *hMSH2* of the mismatch repair system, which results in loss of their expression.[1] Further, defects in the mismatch repair process with subsequent base pair mismatches lead to microsatellite instability (MSI) [1, 2]. Since the failure of the repair system as a cause of genomic instability is associated with a better prognosis [1, 3] many different microsatellite loci have been used to identify MSI in tumors for diagnostic and prognostic purposes.[2] In an attempt to provide uniformity in clinical diagnoses, an international meeting at the National Cancer Institute recommended primary microsatellite markers for use in CRC MSI testing in both clinical and research settings. The recommended Bethesda MSI testing set comprises the microsatellite loci Bat25, Bat26, D2S123, D5S346, and D17S250, characterised by mono- and dinucleotide repeats.[4]

Different technologies have demonstrated their applicability for MSI detection in the past, and fluorochrome-based PCR assays linked to capillary electrophoresis using a sequencing platform are most commonly used.[5] We have focussed on the analysis of microsatellite loci using microfluidic-based on-chip electrophoresis, because recent studies have shown microfluidics technology to be an electrophoresis method with high resolution capacity combined with a short running time (reviewed in [6]),. In the present study, we investigate microfluidics-based chip devices as an analytical platform for MSI detection at all five loci known as the Bethesda panel.

Material and Methods:

Tissue material

Human colorectal cancer tissues were collected at the Institute of Pathology, University Hospital of Cologne, German, in accordance with local research ethical guidelines, fixed in formalin and embedded in paraffin as per routine protocol. From a panel of 150 colorectal carcinomas diagnosed according to the Bethesda guidelines,[4] a total of 40 cases (14 MSI-positive and 26 MSI-negative) were chosen to analyze the suitability of on-chip electrophoresis for MSI diagnosis.

Two 3 μm thick hematoxylin stained sections were evaluated by two pathologists, and tumour as well as non-tumour areas were macrodissected manually for further analyses.

DNA extraction and PCR

The macrodissected specimens were first deparaffinised and then lysed overnight at 56°C by proteinase K digestion (500 $\mu\text{g}/\text{ml}$ proteinase K, 5 mM EDTA, 20 mM Tris pH 8.0). The DNA was extracted using a DNA-extraction kit from Qiagen (Hilden, Germany) according to the manufacturer's instructions. The DNA yield was between 10 and 30 ng/ μl , determined by A_{260} -measurement using a Nanodrop spectrophotometer (PeqLab Biotechnologie, Erlangen Germany) 2 μl DNA extracts

were applied in the Multiplex-PCR approach of Qiagen according to the manufacturer's instructions using 60°C in the annealing step. The details of the primer sets used for amplification of the microsatellite loci Bat25, Bat26, D2S123, APC-D5S346 and MFd15-D17S250 are shown in the supplemental table S1.[2, 5] Primer sets of the Bat25 and the D2S123 loci, and of the D5S346 and the D17S250 loci, respectively, were combined in duplex assays.

MSI analyses by on-chip electrophoresis

For the separation of microsatellite PCR products, we used DNA 1000 LabChip kits, which are manufactured for research purposes only. In brief, the chips were prepared with gel-dye mix, pressurized, and then marker solution and DNA 1000 ladder were added. For this process, 1 µl of each PCR reaction was pipetted into one out of 12 sample wells of a prepared chip. After vortexing, the chip was placed in the Agilent 2100 bioanalyzer. The electrophoresis of 12 samples lasted approximately 30-40 minutes. Fragment analysis was carried out using Agilent's 2100 expert software, and an overlay of two electropherograms was used to compare PCR patterns derived from tumour and non-tumour tissues. Differences in the peak patterns of the overlaid electropherograms were evaluated. Three overlays were used per patient in order to identify instabilities in the microsatellite loci Bat25 and D2S123, D5S346 and D17S250, and Bat26, respectively.

In order to compare the MSI analysis by the *lab-on-a-chip* technology with a conventional method, loci were amplified with fluorochrome-labelled primer sets and analysed on a sequencing platform.[2, 5]

Results and Discussion

Analysis of amplified microsatellite loci by microfluidic-based on-chip electrophoresis

The microsatellite loci of the Bethesda panel, Bat25, Bat26, D2S123, D5S346, and D17S250, recommended for CRC analyses by the conference at NCI [4], were amplified by label-free PCR. All five amplified microsatellite loci, including mono- and dinucleotide repeats, were well resolved by microfluidic-based on-chip electrophoresis (Fig 1). Previous work of Banerjea *et al.* has already shown that amplicons of the microsatellite locus Bat26 can be analysed by microfluidic-based electrophoresis and that this technology provides the advantage of being easy to use and highly standardised because of microfabrication of the chips.[7] In our study, the analysis of all five recommended microsatellite loci took 15 minutes of preparation and no more than 30 minutes of electrophoretic resolving time in comparison to conventional procedures typically taking between four and six hours (Table S2). The benefits of microfluidic-based electrophoresis concerning low time- and equipment-operating expenses have also been shown in other molecular diagnostic approaches such as t(4,14) translocation,[8] mutation analyses and quantification of promoter methylation.[9]

In addition to previous studies, we demonstrate herein that microfluidic-based analyses identify discrepancies in the microsatellite patterns between tumour and non-tumour DNA by the overlay of electropherograms (Fig 1). In 25 cases, the electropherogram pattern of all five microsatellite amplicons from the tumour DNA exactly corresponded to the pattern obtained from non-tumour DNA (Fig 1A), declaring the microsatellite status of these cases as stable (MSS). On the other hand, mismatches observed in the pattern of amplicons derived from tumourous

and non-tumourous tissues clearly indicate microsatellite instability (Fig. 1B). Therefore, the microfluidic-based resolution appears to be an adequate technique to differentiate stable and instable microsatellite loci.

Comparison of MSI analyses by microfluidic-based electrophoresis with conventional methods

Taken together, the assessment of the MSI status by microfluidic-based analysis shows more than 90% concordance with the results of conventional fluorescence-based, laser-associated detection methods. The MSI status of only two cases disagreed, with the MSI analyses by on-chip microfluidic-technology detecting an additional locus of instability in each case (Table 1). In such cases, additional clinical information or data concerning the immunostaining of the repair enzymes hMLH1 and hMSH2 is helpful in deciding how to proceed further.[10] In one discrepant case, negative immunostaining of the MLH1 repair enzyme pointed out that the MSI status proposed by the microfluidic-based electrophoresis appeared to be the correct interpretation.

Table 1: MSI status of colorectal carcinomas based on the results obtained by microfluidic-based chip analyses in comparison to prediagnosis

Samples [n] (%)	prediagnosis by fluorescence-linked PCR-approach and laser-detection	estimation by labelfree PCR and microfluidics
12 (30 %)	MSI-H	MSI-H
1* (2.5 %)	MSI-L	MSI-H
1 (2.5 %)	MSI-L	MSI-L
1* (2.5 %)	MSS	MSI-L
25 (62,5 %)	MSS	MSS

MSS: Stability in all microsatellite loci; MSI-L: Instability in one microsatellite locus; MSI-H: Instability in more than one microsatellite loci (* indicates discrepant data between the techniques applied).

These data demonstrate that the presented microfluidic-based approach is a fast and reliable but also a very sensitive procedure for MSI analyses in clinical studies. Microfluidic-based technologies have the advantage not to depend on a label and thus not to require specialized procedures or equipment to detect the label (Table S2). In contrast, most of the conventional methods applied in MSI detection are dependent on fluorochrome-labelling of PCR amplicon, which are subsequently analysed commonly by capillary electrophoresis using laser-associated sequencing platforms.

In conclusion, the microfluidic-based approach for MSI analyses is a highly time-efficient and easy procedure combined with high sensitivity for MSI detection.

Take Home Message

Microfluidic-based on-chip electrophoresis enables very reliable and sensitive evaluation of microsatellite instability. Therefore, microfluidic-based chip electrophoresis is an adequate procedure suitable for research laboratories and fulfilling the Bethesda criteria for MSI detection while saving time and technical efforts.

Acknowledgements and Funding

Parts of this work were presented as an application comment with Agilent Technologies and as a poster at the 20th European Congress of Pathology in Paris. We greatly appreciate the technical assistance of Stephanie Schreckenber and Melanie Scheffler. In addition, we thank Rüdiger Salowsky (Agilent Technologies, Waldbrunn, Germany) for his technical advice and support in the evaluation of microfluidic-based electrophoresis.

This work was supported by the Research and Education program of the Medical Faculty of the University Cologne (to HP.D).

Competing Interests

All authors certify that they have no competing interests.

Figure legend

Figure 1: Overlay of electropherograms to classify the status of the five microsatellite loci

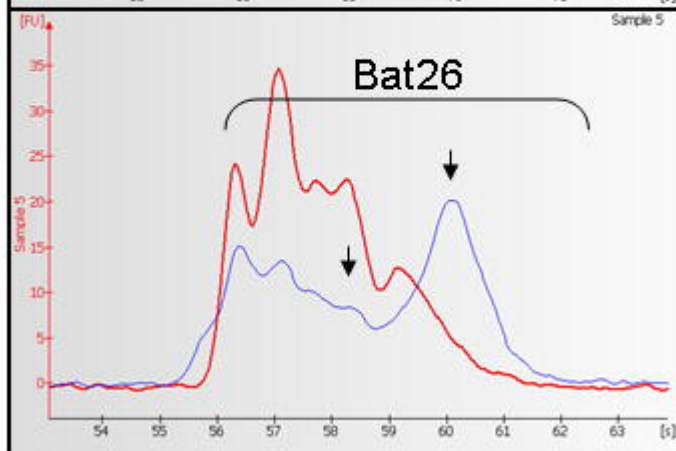
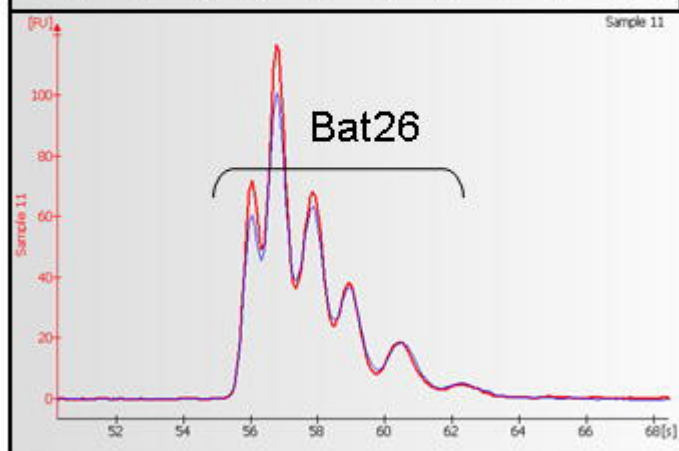
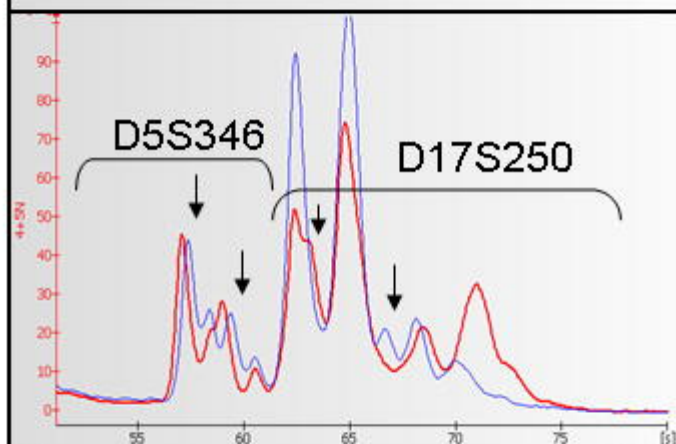
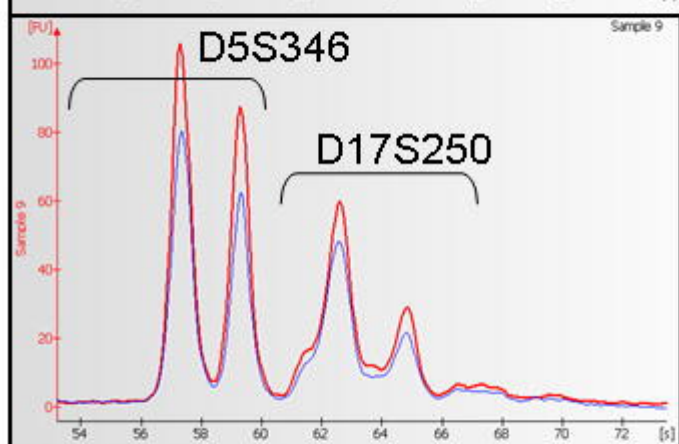
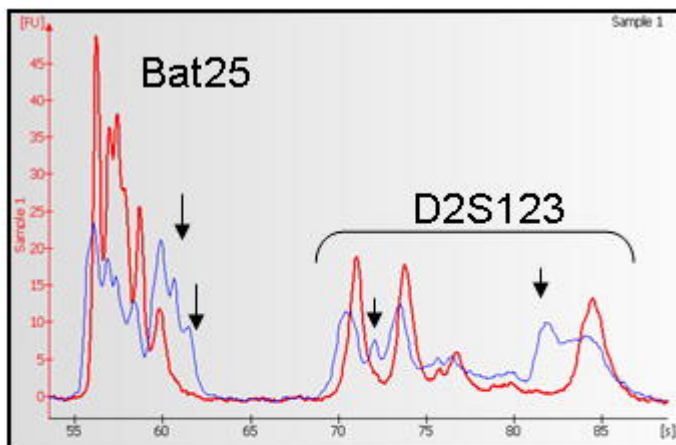
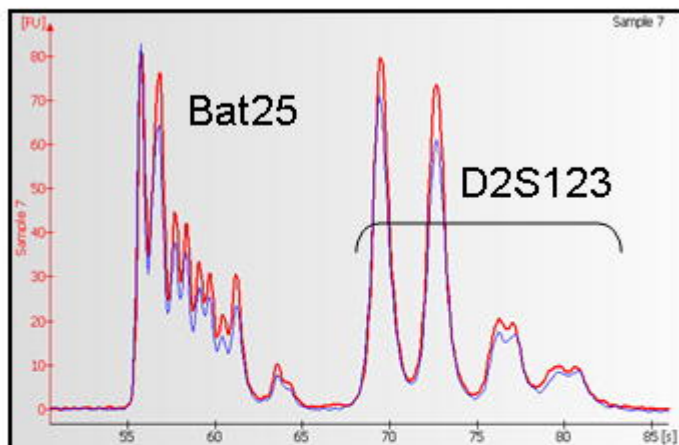
Electropherograms of microfluidic based separation of unlabeled PCR products representing each of the five microsatellite loci Bat25 + D2S123, D5S346 + D17S250, and Bat26 are shown. Bat25 and Bat26 are mononucleotide repeats and D2S123, D5S346, and D17S250 are dinucleotide repeats.

The patterns of the electropherograms representing PCR amplification products derived from normal tissue (red) and tumourous tissue (blue) are perfectly matching and demonstrate microsatellite stability (A). However, the electropherogram overlays in B) show significant deviations in the electrophoretic patterns of the microsatellite loci indicating microsatellite instability (arrows indicate divergent pattern of peaks).

References

1. **Grady WM.** Genomic instability and colon cancer. *Cancer Metastasis Rev.* 2004; **23**:11-27.
2. **Dietmaier W,** Wallinger S, Bocker T, *et al.* Diagnostic microsatellite instability: definition and correlation with mismatch repair protein expression. *Cancer Res.* 1997; **57**:4749-56.
3. **Sankila R,** Aaltonen LA, Jarvinen HJ, *et al.* Better survival rates in patients with MLH1-associated hereditary colorectal cancer. *Gastroenterology.* 1996; **110**:682-7.
4. **Boland CR,** Thibodeau SN, Hamilton SR, *et al.* A National Cancer Institute Workshop on Microsatellite Instability for cancer detection and familial predisposition: development of international criteria for the determination of microsatellite instability in colorectal cancer. *Cancer Res.* 1998; **58**:5248-57.

5. **Berg KD**, Glaser CL, Thompson RE, *et al.* Detection of microsatellite instability by fluorescence multiplex polymerase chain reaction. *J Mol Diagn.* 2000; **2**:20-8.
6. **Ugaz VM**, Elms RD, Lo RC, *et al.* Microfabricated electrophoresis systems for DNA sequencing and genotyping applications: current technology and future directions. *Philos Transact A Math Phys Eng Sci.* 2004; **362**:1105-29.
7. **Banerjea A**, Phillips SM, Dorudi S, *et al.* Colorectal cancers with mononucleotide microsatellite instability can be identified using microfabricated chip technology. *Anal Biochem.* 2003; **322**:130-3.
8. **VanDijken J**, Kaigala GV, Lauzon J, *et al.* Microfluidic chips for detecting the t(4;14) translocation and monitoring disease during treatment using reverse transcriptase-polymerase chain reaction analysis of IgH-MMSET hybrid transcripts. *J Mol Diagn.* 2007; **9**:358-67.
9. **Brena RM**, Auer H, Kornacker K, *et al.* Quantification of DNA methylation in electrofluidics chips (Bio-COBRA). *Nat Protoc.* 2006; **1**:52-8.
10. **Hendriks Y**, Franken P, Dierssen JW, *et al.* Conventional and tissue microarray immunohistochemical expression analysis of mismatch repair in hereditary colorectal tumors. *Am J Pathol.* 2003; **162**:469-77.



A

B



Analysis of microsatellite instability in colorectal carcinoma by microfluidic-based chip electrophoresis

Margarete Odenthal, Nora Barta, Daniela Lohfink, et al.

J Clin Pathol published online July 19, 2008

doi: 10.1136/jcp.2008.056994

Updated information and services can be found at:

<http://jcp.bmj.com/content/early/2008/08/04/jcp.2008.056994>

These include:

P<P	Published online July 19, 2008 in advance of the print journal.
Email alerting service	Receive free email alerts when new articles cite this article. Sign up in the box at the top right corner of the online article.

Topic Collections

Articles on similar topics can be found in the following collections

[Unlocked](#) (33 articles)
[Gynecological cancer](#) (150 articles)

Notes

Advance online articles have been peer reviewed, accepted for publication, edited and typeset, but have not yet appeared in the paper journal. Advance online articles are citable and establish publication priority; they are indexed by PubMed from initial publication. Citations to Advance online articles must include the digital object identifier (DOIs) and date of initial publication.

To request permissions go to:

<http://group.bmj.com/group/rights-licensing/permissions>

To order reprints go to:

<http://journals.bmj.com/cgi/reprintform>

To subscribe to BMJ go to:

<http://group.bmj.com/subscribe/>