

CASE REPORT

Massive myeloid sarcoma affecting the central nervous system, mediastinum, retroperitoneum, liver, and rectum associated with acute myeloblastic leukaemia: a case report

C R Best-Aguilera, M Vazquez-Del Mercado, J F Muñoz-Valle, L Herrera-Zarate, R E Navarro-Hernandez, B T Martin-Marquez, E Oregon-Romero, S Ruiz-Quezada, G M Bonilla, A Lomeli-Guerrero

J Clin Pathol 2005;58:325–327. doi: 10.1136/jcp.2003.015651

Myeloid sarcomas are extramedullary tumours with granulocytic precursors. When associated with acute myelogenous leukaemia (AML), these tumours usually affect no more than two different extramedullary regions. This report describes a myeloid sarcoma associated with AML with tumour formation at five anatomical sites. The patient was a 37 year old man admitted in September 1999 with a two month history of weight loss, symptoms of anaemia, rectal bleeding, and left facial nerve palsy. The anatomical sites affected were: the rectum, the right lobe of the liver, the mediastinum, the retroperitoneum, and the central nervous system. A bone marrow smear was compatible with AML M2. Flow cytometry showed that the peripheral blood was positive for CD4, CD11, CD13, CD14, CD33, CD45, and HLA-DR. A karyotypic study of the bone marrow revealed an 8;21 translocation. The presence of multiple solid tumours in AML is a rare event. Enhanced expression of cell adhesion molecules may be the reason why some patients develop myeloid sarcomas.

Myeloid sarcoma, formerly known as granulocytic sarcoma,¹ was described by Rappaport in 1966.² It is an extramedullary solid tumour composed of myeloblasts and other granulocytic precursors, with or without an associated haematological malignancy.³ This tumour was originally referred to as chloroma, because of its green colour, secondary to the presence of myeloperoxidase.⁴ Single myeloid sarcomas are present in about 2% of patients with acute myelogenous leukaemia (AML). The diagnosis of myeloid sarcoma can be difficult. Traweek advised the use of immunohistochemical staining of paraffin wax embedded tissue sections, using antibodies to CD20, CD33, CD68, and myeloperoxidase, and reported an accuracy of 96%.⁵ In most patients, myeloid sarcoma associated with AML affects no more than two sites. We report a highly unusual patient with multifocal tumours affecting five different anatomical sites, namely: the rectum, the right lobe of the liver, the mediastinum, the kidney, and the brain.

“The diagnosis of myeloid sarcoma can be difficult”

CASE REPORT

A 37 year old man was admitted in September 1999 with a two month history of weight loss, symptoms of anaemia, and rectal bleeding. On examination, he appeared pale, underweight, and tachycardic, with petechiae and ecchymosis on

the lower limbs. Fundoscopic examination showed bilateral papilloedema and several retinal flame haemorrhages. A seventh left cranial nerve lesion was found. The liver edge was 5 cm below the right costal border. Laboratory studies showed a haemoglobin concentration of 45 g/litre, white blood cell count of 4.1×10^9 /litre, platelet count of 50×10^9 /litre, and 35% blast cells; some blast cells contained Auer rods. Lactate dehydrogenase was 12 931 IU/litre (normal range, 91–180). Chest radiography showed mediastinal expansion. Computed tomography of the brain showed a solitary hyperdense subdural nodule, 2.9 cm in diameter in the occipital region (fig 1). Computed tomography of the abdomen and pelvis showed a solid mass, 10 cm in diameter, with regular edges and central hypodensity, compatible with necrosis of the right lobe of the liver. The liver–kidney space was occupied by tumour. The left kidney showed a 4 cm tumour mass. The rectum and sigmoid were infiltrated by an irregular 8 cm diameter tumour (fig 2A, B).

Bone marrow aspiration was compatible with AML M2 (fig 3A, B). Flow cytometry showed that the peripheral blood was positive for CD4, CD11, CD13, CD14, CD33, CD45, and HLA-DR. A bone marrow karyotypic study revealed a 8;21 translocation. A percutaneous ultrasound guided biopsy of the mass anterior to the right kidney was done. A touch preparation showed abundant Sudan black positive myeloblasts (some with Auer rods) (fig 3C, D). The cerebral spinal fluid contained Sudan black and myeloperoxidase positive myeloblasts (fig 3E, F).

The patient received combination chemotherapy and cranio-spinal radiotherapy, and achieved complete haematological

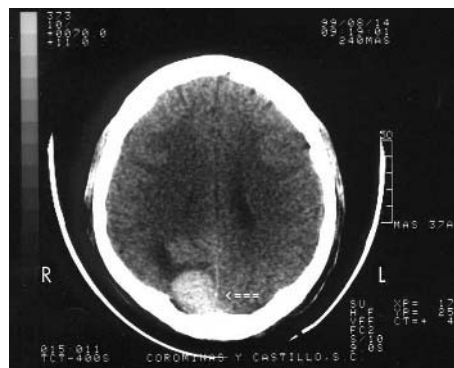


Figure 1 Brain computed tomography scan showing a solitary mass at the right occipital region, indicated by a closed arrow.

Abbreviations: AML, acute myelogenous leukaemia

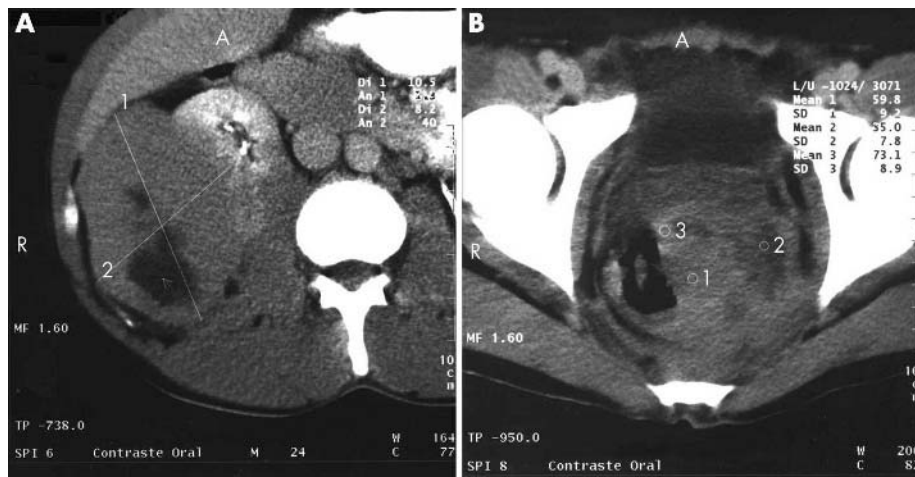


Figure 2 (A) Abdominal computed tomography scan showing a solid tumour with hypodensities suggestive of necrosis in the hepatorenal space and retroperitoneal cavity, causing a compression effect against the right kidney. (B) Pelvic computed tomography scan showing the presence of a solid tumour at the rectum–sigmoid level, with hypodensities indicated by the numbers 1, 2, and 3.

remission, which was maintained for 18 months. Despite an allogeneic bone marrow transplant, he subsequently relapsed and at relapse had myeloid sarcomas in the inferior pole of the right kidney, at the right ureterovesical junction, and the rectum.

DISCUSSION

Myeloid sarcoma is an extramedullary tumour composed of granulocyte precursors.² It is frequently found in bones, peritoneum, lymph nodes, skin, and epidural structures.⁶ Myeloid sarcoma in patients with t(8;21) was first reported in 1984 by Swirsky *et al*, who found that seven of 30 patients with t(8;21) had solid leukaemic deposits, principally in the mastoid, orbital cavities, or thoracic spine (extradural).⁷ Because myeloid sarcoma can be seen in the absence of

AML, evaluation of unusual tumours by immunohistochemical staining for CD33, CD68, and myeloperoxidase is advised.⁵

“The presence of neural cell adhesion molecule on the surface of blast cells has been shown to enhance their propensity for tissue penetration into the central nervous system”

Solid tumour masses are uncommon in AML and their presence might be attributable to overexpression of cell adhesion molecules. The presence of neural cell adhesion molecule on the surface of blast cells has been shown to enhance their propensity for tissue penetration into the central nervous system, in particular into the cerebellum.⁸

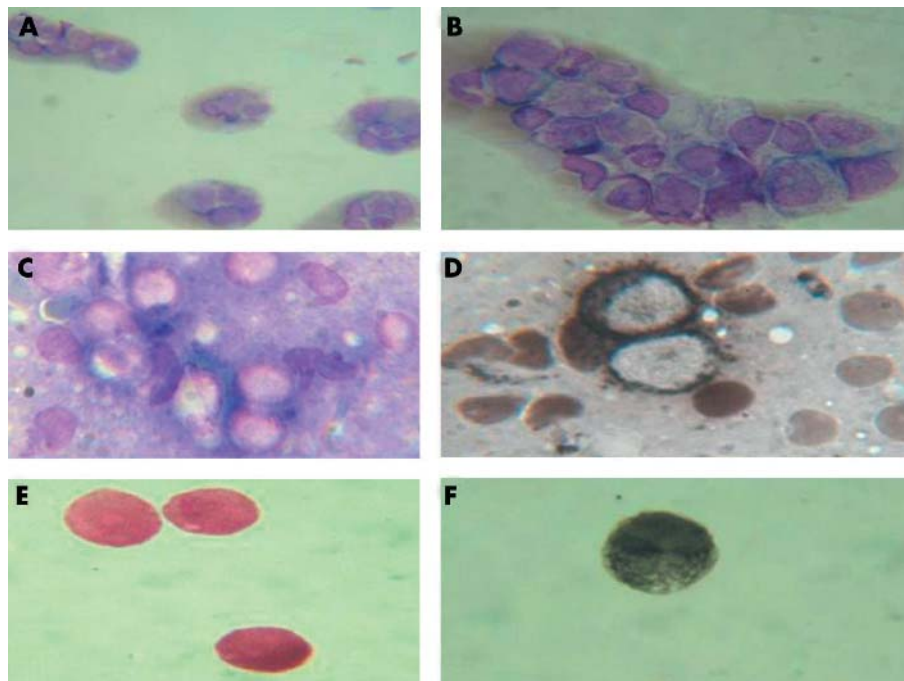


Figure 3 (A) Low power view of a bone marrow smear (Wright stain) showing a clump of myeloblasts; original magnification, $\times 40$. (B) High power view of a bone marrow smear (Wright stain) showing a clump of myeloblasts; original magnification, $\times 100$. (C) High power view of a touch preparation of the pararenal tumour mass (Wright stain); original magnification, $\times 100$. (D) Touch preparation of the pararenal tumour mass showing Sudan black positive myeloblasts. (E) Cerebrospinal fluid smear showing myeloblast infiltration (Wright stain). (F) Cerebrospinal fluid smear showing myeloblast infiltration (Sudan black stain).

Take home messages

- We describe an unusual case of myeloid sarcoma associated with acute myelogenous leukaemia (AML) with tumour formation at five anatomical sites
- The anatomical sites affected were: the rectum, the right lobe of the liver, the mediastinum, the retro-peritoneum, and the central nervous system
- The presence of multiple solid tumours in AML is rare
- The development of myeloid sarcomas may be associated with enhanced expression of cell adhesion molecules

Allogeneic bone marrow transplantation has been advocated in patients with a solitary myeloid sarcoma,⁹ but was not of longterm benefit in our patient with AML and multiple myeloid sarcomas.¹⁰

Authors' affiliations

C R Best-Aguilera, I Herrera-Zarate, A Lomeli-Guerrero, Departamento de Hematología, Hospital General de Occidente, SSJ, Zapopan, Jalisco, 45170 México

M Vazquez-Del Mercado, J F Muñoz-Valle, R E Navarro-Hernandez, B T Martín-Marquez, E Oregon-Romero, S Ruiz-Quezada, G M Bonilla, Centro Universitario de Ciencias de la Salud, Universidad de Guadalajara, 44290 Mexico

The patient gave his permission for this case report to be published

Correspondence to: Dr C R Best-Aguilera, Av. Zoquipan, 1050 Zapopan Jal., México, 45175; bestvme@cencar.udg.mx

Accepted for publication 6 October 2004

REFERENCES

- 1 **Vardiman JW**, Harris NL, Brunning RD. The World Health Organisation (WHO) classification of the myeloid neoplasmas. *Blood* 2002;**100**:2292–302.
- 2 **Rappaport H**. Tumors of the hematopoietic system. In: *Atlas of tumor pathology*, Section 3, Fascicle 8. Washington DC: Armed Forces Institute of Pathology, 1966:241–43.
- 3 **Lin PJ**, Ishimani T, McGregor DH, *et al*. Autopsy study of granulocytic sarcoma (chloroma) in patients with myelogenous leukemia. Hiroshima-Nagasaki 1949–1969. *Cancer* 1973;**31**:948–55.
- 4 **Alama Zaragoza MA**, Robles Iniesta A, Roca Adelanatado I, *et al*. Hepatic granulocytic sarcoma: an unusual presentation. *An Med Interna* 2003;**20**:141–4.
- 5 **Traweek ST**, Arber DA, Rappaport H, *et al*. Extramedullary myeloid cell tumors: an immunohistochemical and morphologic study of 28 cases. *Am J Surg Pathol* 1993;**17**:1011–19.
- 6 **Sisack MJ**, Dunsmore K, Sidhu-Malik N. Granulocytic sarcoma in absence of myeloid leukemia. *J Am Acad Dermatol* 1997;**37**:308–11.
- 7 **Swirsky DM**, Li YS, Matthews JG, *et al*. 8;21 translocation in acute granulocytic leukaemia: cytological, cytochemical and clinical features. *Br J Haematol* 1984;**56**:199–213.
- 8 **Neiman RS**, Barcos M, Berald C, *et al*. Granulocytic sarcoma: a clinicopathologic study of 61 biopsied cases. *Cancer* 1981;**48**:1426–37.
- 9 **Psiachou-Leonard E**, Paterakis G, Stefanaki K, *et al*. Cerebellar granulocytic sarcoma in an infant with CD56+ acute monoblastic leukemia. *Leuk Res* 2001;**25**:1019–21.
- 10 **Imrie KR**, Kovacs MJ, Selby D, *et al*. Isolated chloroma: the effect of early antileukemic therapy. *Ann Intern Med* 1995;**123**:351–3.



Massive myeloid sarcoma affecting the central nervous system, mediastinum, retroperitoneum, liver, and rectum associated with acute myeloblastic leukaemia: a case report

C R Best-Aguilera, M Vazquez-Del Mercado, J F Muñoz-Valle, et al.

J Clin Pathol 2005 58: 325-327

doi: 10.1136/jcp.2003.015651

Updated information and services can be found at:

<http://jcp.bmj.com/content/58/3/325.full.html>

These include:

References

This article cites 9 articles, 2 of which can be accessed free at:

<http://jcp.bmj.com/content/58/3/325.full.html#ref-list-1>

Email alerting service

Receive free email alerts when new articles cite this article. Sign up in the box at the top right corner of the online article.

Topic Collections

Articles on similar topics can be found in the following collections

[Immunology \(including allergy\)](#) (1279 articles)

Notes

To request permissions go to:

<http://group.bmj.com/group/rights-licensing/permissions>

To order reprints go to:

<http://journals.bmj.com/cgi/reprintform>

To subscribe to BMJ go to:

<http://group.bmj.com/subscribe/>