

## CASE REPORT

# Low grade marginal zone B cell lymphoma of the breast associated with localised amyloidosis and corpora amylacea in a woman with long standing primary Sjögren's syndrome

M Kambouchner, P Godmer, L Guillevin, M Raphaël, D Droz, A Martin

*J Clin Pathol* 2003;56:74-77

Primary low grade marginal zone B cell lymphoma (MZL) of the breast and localised mammary amyloidosis are exceedingly rare entities. This report describes the case of a woman with long standing Sjögren's syndrome presenting with asymptomatic MZL of the breast showing plasmacytic differentiation, associated with local ductular amyloidosis. The lesion was discovered incidentally in breast tissue resected for microcalcifications. Immunohistochemistry revealed  $\kappa$  light chain restriction, supporting the neoplastic nature of the infiltrate. A retrospective molecular study of the salivary gland biopsy showed a B cell clone. This is the first report of the association of human mammary ductular amyloidosis with cartwheel shaped material identical to corpora amylacea, usually seen in brain, lung, and prostate, but unknown in the human breast. The excellent outcome without treatment seen in this patient further emphasises the need to distinguish between MZL with plasmacytic differentiation and extramedullary plasmacytoma.

Primary breast non-Hodgkin's lymphomas, which comprise less than 0.5% of all malignant tumours of the breast, are mainly of the large B cell type.<sup>1</sup> Marginal zone B cell lymphomas (MZL) are exceedingly rare in the breast. Many patients with MZL have a history of chronic inflammation or autoimmune disorders. Patients with Sjögren's syndrome have a 44 fold increased risk of developing lymphoma.<sup>2</sup> Mammary tissue amyloidosis is also rare and has never been described predominantly in ducts. A highly unusual mammary MZL with ductal amyloidosis admixed with corpora amylacea in the setting of Sjögren's syndrome is described.

"Patients with Sjögren's syndrome have a 44 fold increased risk of developing lymphoma"

### CASE REPORT

A 37 year old woman with a 10 year history of primary Sjögren's syndrome presented with left axillary lymphadenopathy and radiographic microcalcifications of the left breast. Sjögren's syndrome, first manifested by arthralgias and xerostomia, was confirmed by lymphocytic Chishölm grade IV infiltration of the accessory salivary gland.<sup>3</sup> The patient had remained asymptomatic during 10 years of follow up. However, routine monitoring demonstrated persistent lymphopenia (3600 white blood cells/mm<sup>3</sup>) and a slightly raised erythrocyte sedimentation rate (40 mm/1st hour), probably as a result of polyclonal hypergammaglobulinaemia (25 g/litre).

Tests for antinuclear antibodies (SSA) and rheumatoid factors (latex, 1/60; Waaler Rose, 1/80) were positive; cryoglobulins were detected. In November 1998, a mobile lymphadenopathy was found in the left axillary area, with no palpable breast mass or other physical abnormality. Mammography visualised a focus of microcalcifications within the left breast. Computerised thoracic and abdominal tomographic examination did not show internal lymph nodes or splenomegaly. The left axillary node and breast microcalcifications were surgically excised and subjected in their entirety to histological examination.

### Pathological findings

The axillary node showed no major histological changes.

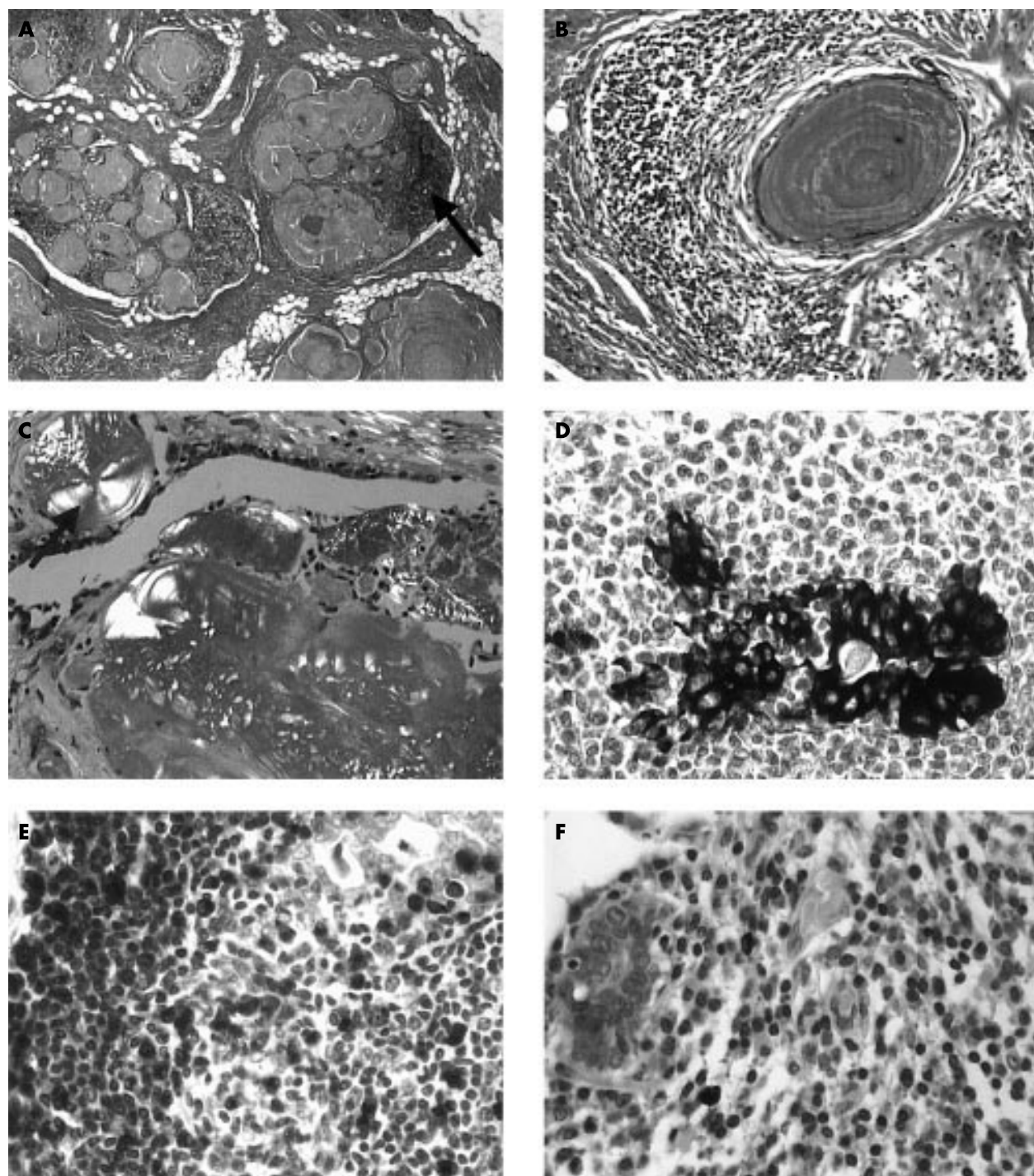
The breast stroma contained a dense cellular infiltrate aggregated exclusively around ductules, the lumens of which were entirely filled with eosinophilic material (fig 1A). The cellular infiltrate comprised lymphoid cells with slightly irregular nuclei admixed with mature plasmacytes. No lymphoid follicles were seen. The lobular structure was maintained, except in some areas where focal lymphoepithelial disruptions were seen.

The eosinophilic material comprised foci of microcalcifications, which were surprisingly associated with periodic acid Schiff (PAS) positive, sharply delineated round structures resembling corpora amylacea (fig 1B). Congo red staining was positive and polarised light induced green birefringence (fig 1C) that persisted after 5% potassium permanganate pretreatment, thereby indicating that it was not AA amyloid type. In addition, crystal violet staining was positive and thioflavine T staining demonstrated characteristic apple green fluorescence.

### Ultrastructural study

A formalin fixed, paraffin wax embedded breast specimen was cut into small blocks of about 1 mm<sup>3</sup>, washed in phosphate buffered saline (PBS) and sequentially fixed in PBS buffered 2% glutaraldehyde for four hours and 1% osmium tetroxide for one hour, then dehydrated in graded alcohol, embedded in epoxy resin, and submitted for ultrastructural analysis according to standard procedures for electron microscopy. The framework of amorphous Congo red positive deposits consisted of aggregates of non-branching filaments haphazardly distributed (fig 2A). Areas of sharply delineated structures resembling corpora amylacea demonstrated spherical masses of fibrillary material displaying radial organisation (fig 2B).

**Abbreviations:** MZL, marginal zone B cell lymphoma; PAS, periodic acid Schiff; PBS, phosphate buffered saline



**Figure 1** (A) Low magnification of the breast lesion: lobulocentric lymphocytic infiltrate (arrow) surrounding lobules. The ductules are filled with amorphous eosinophilic material (haematoxylin, eosin, and safran staining); (B) sharply delineated corpora amylacea within a mammary ductule (haematoxylin, eosin, and safran staining); (C) Congo red staining: green birefringence of amyloid deposits under polarised light; note the cartwheel pattern (arrow) of corpora amylacea; (D) obvious lymphoepithelial lesion in a ductule (KL1 (anticytokeratin) immunostaining); (E) plasmacytes strongly expressing the  $\kappa$  light chain; (F) only rare cells express immunoglobulin  $\lambda$  light chain.

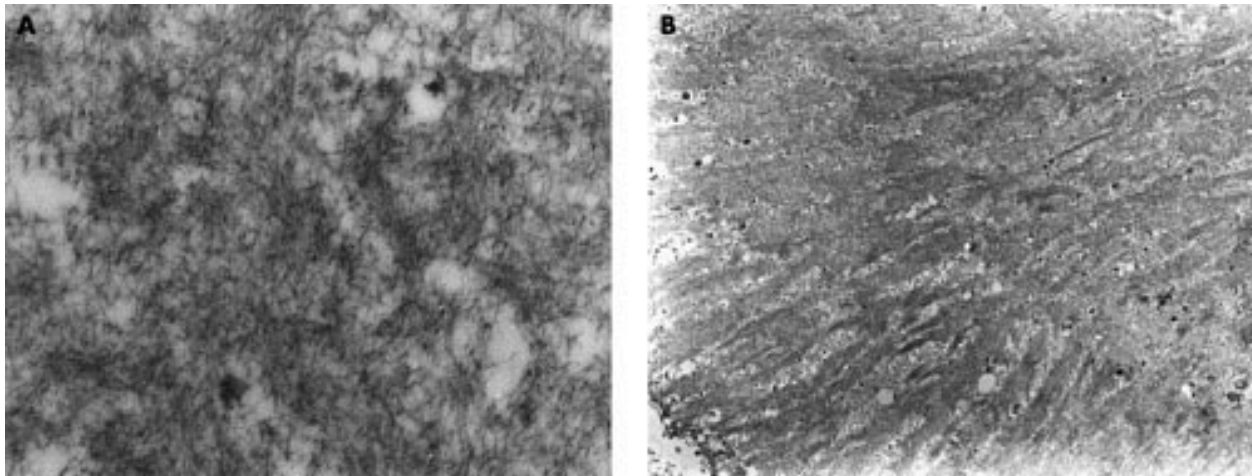
### Immunohistochemical labelling

Anti-CD20 (clone L26) labelled most of the cells surrounding mammary ductules. Antibodies to CD5 (clone 4C7), CD23 (clone 1B12), and CD10 (clone 56C6) were negative. Lymphoepithelial lesions (fig 1D) were recognised by anticytokeratin antibody (clone KL1). Strong  $\kappa$  light chain restriction was demonstrated (fig 1E) with only rare  $\lambda$  positive normal cells (fig 1F). The negativity of anti-amyloid AA serum

(clone mc1) confirmed the previous results. Because the breast biopsy had been fixed, molecular characterisation of the light chains was not possible. The axillary node did not demonstrate light chain restriction.

### Molecular study

Clonal rearrangements of the immunoglobulin heavy and light chain genes were detected retrospectively in the frozen



**Figure 2** (A) Typical amorphous amyloid deposits showing large amounts of amyloid filaments haphazardly arranged (electron micrograph; original magnification,  $\times 10\,000$ ); (B) corpora amylacea showing masses of fibrillary material in parallel arrays (electron micrograph; original magnification,  $\times 56\,000$ ).

salivary gland biopsy with the framework region 3 JH primers. Exposure to Bouin's solution rendered the DNA extracted from the breast tissue unusable for PCR evaluation.

#### Follow up

After 3.5 years of follow up without treatment, the patient has remained free of local MZL recurrence and visceral dissemination. Histological evaluation of medullary bone and rectal mucosa biopsies failed to demonstrate systemic amyloidosis.

#### DISCUSSION

We describe a patient with Sjögren's syndrome in whom asymptomatic breast microcalcifications revealed a primary mammary MZL associated with localised deposits of amyloidosis admixed with corpora amylacea. Although the overall feature of this lesion was similar to that of a plasmacytic lobulitis,<sup>4</sup> foci of lymphoepithelial destruction and  $\kappa$  light chain restriction supported the diagnosis of MZL. The search for clonality in the breast specimen could not be performed because of previous fixation.

"Ductal amyloidosis represents another unusual finding in our patient because it has rarely been associated with marginal zone B cell lymphoma"

The increased incidence of low grade B cell clones emerging in patients with autoimmune disorders is established. MZLs develop in lymph nodes or extranodal sites, and are usually found in the gastrointestinal mucosa, lung, thyroid, parotid, and conjunctiva. MZL of the breast is exceedingly rare. Thieblemont *et al* studied 108 patients with MZL and in only two cases were the tumours breast related.<sup>5</sup> Two cases have been reported in association with autoimmune disease: one case associated with local stromal amyloidosis in a woman with systemic lupus erythematosus<sup>6</sup> and another without amyloidosis in a woman with Sjögren's syndrome.<sup>7</sup> Schwartz and Strauschen described eight women with lobulocentric B cell type hyperplasia of the breast, referred to as "lymphocytic mastopathy", three of whom presented with autoimmune disorders,<sup>4</sup> but there was no evidence of a plasmacyte component associated with light chain restriction.

Ductal amyloidosis represents another unusual finding in our patient because it has rarely been associated with MZL: only once each in breast stroma and vessels,<sup>6</sup> jejuno-ileal mucosa,<sup>8</sup> and salivary glands,<sup>9</sup> in addition to six cases of pulmonary MZL.<sup>10</sup> Although we could not demonstrate light

#### Take home messages

- This is the first report of a case of primary low grade marginal zone B cell lymphoma (MZL) with local ductular amyloidosis admixed with corpora amylacea, normally found in brain, lung, and prostate, but not in the breast
- This lesion occurred in a woman with long standing Sjögren's syndrome and immunohistochemistry revealed  $\kappa$  light chain restriction, supporting the neoplastic nature of the infiltrate
- The excellent outcome, without treatment, seen in this patient further emphasises the need to distinguish between MZL with plasmacytic differentiation and extramedullary plasmacytoma

chains immunohistochemically, the ductal amyloidosis is probably secreted with immunoglobulin light chains. Surprisingly, the amorphous deposits in our case, which comprised typical ultrastructural amyloid fibres (fig 2A), were associated with spheroid PAS positive and Congo red positive structures resembling corpora amylacea, often seen in brain, lung, and prostate but unknown in human breast. In our case, ultrastructural examination of these structures showed aggregates of radiating fibrils in a parallel arrangement. Congo red positive corpora amylacea with similar ultrastructural features were observed by veterinary pathologists in canine and bovine mammary tissue.<sup>11</sup> There is no consensus concerning the mechanisms involved in the formation of corpora amylacea. The prevailing theory in bovine mammary tissue is that they originate from a matrix of organic material derived from casein with crystalline hydroxyapatite and local deposits of  $\beta 2$  microglobulin.<sup>12</sup>

Finally, the exceptional role of microcalcifications in the revelation of this asymptomatic breast MZL should be kept in mind. It emphasises the need for careful clinical examination of nodes and extranodal organs supposedly affected by MZL in patients with long standing autoimmune disorders.

#### ACKNOWLEDGEMENT

The authors thank Mrs N Lièvre for her technical help.

#### Authors' affiliations

M Kambouchner, A Martin, Department of Pathology, Avicenne Hospital, 125 Route de Stalingrad, Bobigny 93009 Cedex, France

**P Godmer, L Guillevin**, Department of Internal Medicine, Avicenne Hospital  
**M Raphaël**, Department of Haematology, Avicenne Hospital  
**D Droz**, Department of Pathology, Saint-Louis Hospital, Paris, France

Correspondence to: Dr Kambouchner, Service d'Anatomie Pathologique, Hopital Avicenne, 125 Route de Stalingrad, Bobigny 93009 Cedex, France; [marianne.kambouchner@avc.ap-hop-paris.fr](mailto:marianne.kambouchner@avc.ap-hop-paris.fr)

Accepted for publication 15 July 2002

## REFERENCES

- Cohen PL**, Brooks JJ. Lymphoma of the breast: a clinicopathologic and immunohistochemical study of primary and secondary cases. *Cancer* 1991;**67**:1359–69.
- Kassan SS**, Thomas TL, Moutsopoulos HM, *et al*. Increased risk of lymphoma in sicca syndrome. *Ann Intern Med* 1978;**89**:888–92.
- Chisholm DM**, Mason DK. Labial salivary gland biopsy in Sjögren's syndrome. *J Clin Pathol* 1968;**21**:656–60.
- Schwartz IS**, Strauchen JA. Lymphocytic mastopathy. An autoimmune disease of the breast? *Am J Clin Pathol* 1990;**93**:725–30.
- Thieblemont C**, Bastion Y, Berger F, *et al*. Mucosa-associated lymphoid tissue. Gastrointestinal and non-gastrointestinal lymphoma behavior. Analysis of 108 patients. *J Clin Oncol* 1997;**15**:1624–30.
- Gupta D**, Shidham V, Zemba-Palko V, *et al*. Primary bilateral mucosa-associated lymphoid tissue of the breast with atypical ductal hyperplasia and localized amyloidosis. *Arch Pathol Lab Med* 2000;**124**:1233–6.
- Okabe S**, Kuriyama Y, Kawanishi Y, *et al*. MALT lymphoma originating in breast and uvula. *Leuk Lymphoma* 2001;**41**:461–3.
- Caulet S**, Bardaxoglou RE, Noret P, *et al*. Malignant lymphoma of mucosa associated lymphoid tissue: a new etiology of amyloidosis. *Pathol Res Pract* 1995;**191**:1203–7.
- Odell EW**, Lombardi T, Shirlaw PJ, *et al*. Minor salivary gland hyalinization and amyloidosis in low-grade lymphoma of MALT. *J Oral Pathol Med* 1998;**27**:229–32.
- Lim JK**, Lacy MQ, Kurtin PJ, *et al*. Pulmonary marginal zone lymphoma of MALT type as a cause of localised pulmonary amyloidosis. *J Clin Pathol* 2001;**54**:642–6.
- Niewold TA**, Murphy CL, Hulskamp-Koch CA, *et al*. Casein related amyloid, characterization of a new and unique amyloid protein isolated from bovine corpora amylacea. *Amyloid* 1999;**6**:244–9.
- Brooker BE**. The origin, structure and occurrence of corpora amylacea in the bovine mammary gland and in milk. *Cell Tissue Res* 1978;**191**:525–38.

## ECHO

### New chemokines may have a role in vernal keratoconjunctivitis



Please visit the Molecular Pathology website [[www.molpath.com](http://www.molpath.com)] for link to this full article.

New attractants of T lymphocytes and several activation factors contribute to inflammation in vernal keratoconjunctivitis (VKC), a molecular study has found. The findings may help to explain how T lymphocytes are recruited to the conjunctiva.

Three chemokines—pulmonary and activation regulated chemokine (PARC), macrophage derived chemokine (MDC), and 1-309, the MDC receptor CCR4—strongly attractive to T lymphocytes were present in the cytoplasm of inflammatory cells in sections of conjunctivas from patients with VKC. PARC predominated, appearing in all specimens and in many more of the abundant CD3+ T lymphocytes in the upper substantia propria. MDC and 1-309 showed up in nine and six specimens, respectively.

Among five activation factors tested, CD25 occurred in significantly more T lymphocytes than the others. The mean cell numbers for the remaining factors were significantly different from each other and were, in descending order, CD26, CD62L, CD71, and CD30. CD25 also showed a strong link with CD3+ T lymphocytes and with the number of cells expressing PARC. Conjunctivas from controls with no inflammation were weakly positive only for CD26.

Biopsy specimens of limbal conjunctiva were taken from 11 Saudi children with active disease and eight control children of similar age having an operation for strabismus. Thin sections were stained immunohistochemically for each chemokine and activation factor.

How and why T lymphocytes present in this chronic inflammatory condition migrate to the conjunctiva is not understood. So the new chemokines were prime candidates for study.

▲ *British Journal of Ophthalmology* 2002;**86**:1175–1180.



## New chemokines may have a role in vernal keratoconjunctivitis

*J Clin Pathol* 2003 56: 77  
doi: 10.1136/jcp.56.1.77

---

Updated information and services can be found at:  
<http://jcp.bmj.com/content/56/1/77.full.html>

---

*These include:*

### References

This article cites 1 articles, 1 of which can be accessed free at:  
<http://jcp.bmj.com/content/56/1/77.full.html#ref-list-1>

### Email alerting service

Receive free email alerts when new articles cite this article. Sign up in the box at the top right corner of the online article.

---

### Notes

---

To request permissions go to:  
<http://group.bmj.com/group/rights-licensing/permissions>

To order reprints go to:  
<http://journals.bmj.com/cgi/reprintform>

To subscribe to BMJ go to:  
<http://group.bmj.com/subscribe/>