

## LETTERS TO JCP

## Primary amyloid tumour of the breast: a case report

M V Deolekar, J Larsen, J A Morris

*J Clin Pathol* 2002;**55**:634–635

A case of primary amyloid tumour of the breast is reported with a brief review of the literature. The tumour was mammographically suspicious of carcinoma. Fine needle aspiration cytology yielded clumps of amorphous material surrounded by giant cells and lymphocytes. Subsequent histology showed nodular amyloid associated with osseous metaplasia and giant cell reaction. There are 13 cases of amyloid tumour of the breast reported in the literature and in four of these fine needle aspiration had been undertaken.

Amyloidosis in the breast was first reported by Fernandez and Hernandez in 1973.<sup>1</sup> Subsequently, several cases have been documented in the literature, including women with bilateral breast involvement.<sup>2–7</sup> Most of the reported cases were elderly women who had mammographically suspicious lesions. By definition, amyloidosis is extracellular deposition of amorphous congophilic protein within tissues.<sup>8</sup> To date, 15 different protein structures of amyloid have been identified, with AL and AA being the most common.<sup>9</sup> Skin, tongue, the gastrointestinal tract, and the respiratory tract are other sites where primary amyloidosis is commonly reported. As in our case, most of the cytology case reports describe the appreciation of amyloid material in fine needle aspiration preparations only in retrospect.<sup>4–6</sup>

“By definition, amyloidosis is extracellular deposition of amorphous congophilic protein within tissues”

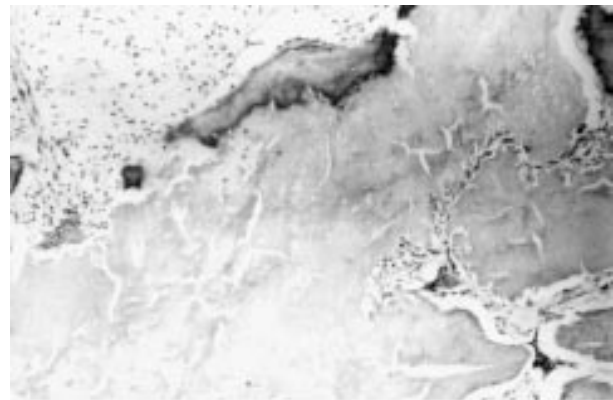
## CASE REPORT

A 86 year old white woman presented to the regional breast screening service with a palpable left breast lump. She was known to have hyperthyroidism and diet controlled diabetes and was on regular treatment. She had a mild degree of osteopenia and had suffered repeated falls in the past. She had a permanent cardiac pacemaker since 1994 for blackouts. In March 2000 she had complete left bundle branch block and since then she was treated with digoxin for atrial fibrillation. Her breast lump was suspicious of malignancy, both clinically and mammographically, with malignant looking microcalcification. Fine needle aspiration cytology was performed, which was negative for malignancy, and reported to show a non-specific inflammatory reaction only. In view of the clinical and mammographic suspicion, excision biopsy of this lesion was performed.

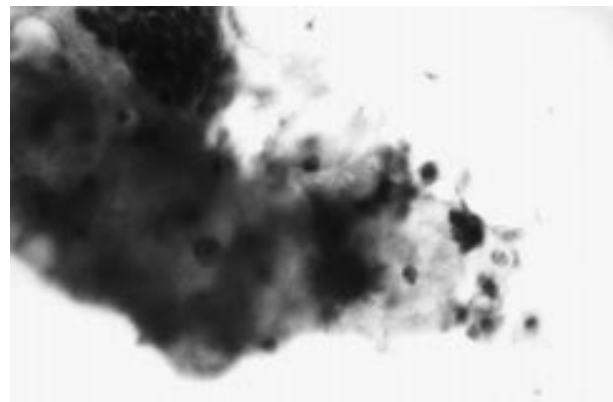
On gross examination, the breast tissue weighed 7.5 gm. Serial slicing of the excised mass showed a 1.6 cm size firm nodule close to the excision margins. All the tissue had been processed. Subsequent histological examination showed a mass composed of hyaline eosinophilic material surrounded by giant cells. There were foci of osseous metaplasia (fig 1). At the periphery, numerous plasma cells containing Russell bodies and lymphocytes were present. The congo red stain was positive in this hyaline material and showed apple green birefringence on polarising microscopy. Apart from this localised

mass, amyloid was seen around occasional breast ducts and blood vessels. However, there was no amyloid within the walls of the blood vessels. There was no evidence of malignancy in the specimen submitted.

To evaluate the nature of this amyloid further, the sections were pretreated with potassium permanganate and then a congo red stain was carried out.<sup>10</sup> The material resisted potassium permanganate treatment and retained its orange brown colour, thus confirming the AL type of amyloid. Considering the nature of amyloid the patient was investigated further. Her chest, spine, and skull radiographs were normal. The serum electrophoresis was also unremarkable. Urinary Bence-Jones proteins were negative. The haematology profile was normal. The cytology preparations were reviewed and showed amorphous homogenous material surrounded by giant cells and lymphocytes (fig 2).



**Figure 1** Histopathology showing amyloid with osseous metaplasia. Haematoxylin and eosin stained; original magnification,  $\times 100$ .



**Figure 2** Cytology showing a fragment of hyaline dense amyloid material and giant cells. PAP stain; original magnification,  $\times 400$ .

**Table 1** Amyloid tumour of the breast; case reports to date

Author (Ref)	Year	No. of cases	Age	Site	Clinical diagnosis	Cells	Amyloid type
Fernandez and Hernandez (1)	1973	1	62	RUO	Cancer	P+L+G	–
Walker <i>et al</i> (2)	1982	1	55	LUO	–	P+L+G	–
McMahon <i>et al</i> (3)	1984	1	54	R	Cancer	P+L	AL (κ)
Lew and Seymour (4)	1985	1	63	RUO	Cancer	P+L	AA
Silverman <i>et al</i> (6)	1986	2	67	R	Cancer	P+L+G	AL (IgA)
			79	L	Cancer	P+L+G	AL (IgG)
Cheung <i>et al</i> (5)	1986	1	82	Bi	Cancer	P+L+G	–
Santini <i>et al</i> (15)	1992	1	75	L	Cancer	–	–
Lynch and Moriarty (11)	1993	1	72	Bi	Cancer	L+G	AL (IgG) (κ)
Gupta and Dowle (13)	1996	1	43	L	Cancer	P	AL
Luo and Rotterdam (7)	1997	1	82	R	Cancer	L+G	AA
Yokoo and Nakazato (12)	1998	1	76	R	Fibroadeoma	P+G	AL
Gupta <i>et al</i> (14)	2000	1	64	L	Cancer	P+L+G	P component
Deolekar <i>et al</i>	2002	1	86	L	Cancer	P+L+G	AL

Site: Bi, bilateral; L, left; LUO, left upper quadrant; R, right; RUO, right upper quadrant. Cells: G, giant cells; L, lymphocytes; P, plasma cells.

## DISCUSSION

Amyloidosis of the breast can occur as organ specific nodular amyloidosis or as part of systemic amyloidosis. Organ specific nodular amyloidosis has been reported in skin, trachea, bronchi, and the urogenital tract, with breast being the lowest in frequency. To our knowledge, 13 cases of localised breast amyloidosis have been reported (table 1).<sup>1–7 11–15</sup> Of these, our case is only the third to show foci of osteoid metaplasia, the previous ones having been documented by Lynch and Moriarty<sup>11</sup> and by Yokoo and Nakazato.<sup>12</sup> Two patients had bilateral amyloid deposits.<sup>5 11</sup> In one patient, breast amyloidosis was associated with mucosa associated lymphoid tissue lymphoma.<sup>14</sup> Localised amyloid deposits have been reported in a range of endocrine neoplasms including medullary carcinoma of the thyroid, bronchial carcinoid, pheochromocytoma, and insulinoma. None of these was present in our case. Similarly, there was no evidence of chronic illness, such as rheumatoid arthritis.

In breast screening units, fine needle aspiration cytology is now a routine tool to distinguish benign and malignant lesions. The cytological findings in amyloid tumour have been reported in four cases.<sup>4 6 11 13</sup> As in our patient, the presence of amyloid in the fine needle aspirate was only noticed retrospectively in all these reports.

“The AL nature of localised amyloidosis is now thought to be derived from localised plasma cells secreting immunoglobulins; that is, immunocyte derived amyloid”

To date, the histochemical nature of amyloid has been determined in nine of 13 cases (table 1). Of these, only two had AA amyloid and the remaining cases, including our own, had AL amyloid. The AA amyloid was associated with a carcinoma in one patient<sup>4</sup> and it was thought to be the result of an abnormal immune response in the other.<sup>7</sup>

Most patients with the AL type of amyloid do not have classic multiple myeloma or an overt B cell neoplasm. Such cases have traditionally been classified as primary amyloidosis because their clinical features derive from the effects of amyloid deposition with no other associated disease.<sup>9</sup> The AL nature of localised amyloidosis is now thought to be derived from localised plasma cells secreting immunoglobulins; that is, immunocyte derived amyloid.<sup>9</sup> In our patient, there were many plasma cells containing Russell bodies in the vicinity of the amyloid. Considering the clinical details of our patient the localised breast amyloidosis is probably primary.

In summary, localised breast amyloidosis is a rare entity and can have a diverse aetiology. It occurs in elderly women and is clinically and mammographically suspicious of carcinoma. If breast screening is extended to older age groups, this lesion could be diagnosed more frequently.

## Take home messages

- We report a case of amyloidosis localised to the breast
- This is a rare entity that can have a diverse aetiology
- This lesion occurs mostly in elderly women and is clinically and mammographically suspicious of carcinoma
- If breast screening is extended to older age groups, it may be diagnosed more frequently

## Authors' affiliations

MV Deolekar, JA Morris, Department of Pathology, Royal Lancaster Infirmary, Lancaster LA1 4RP, UK

J Larsen, Department of Radiology, Royal Lancaster Infirmary

Correspondence to: Dr M V Deolekar, Royal Bolton Hospital, Minerva Road, Farnworth, Bolton BL4 0JR, UK; madhurideolekar@yahoo.com

Accepted for publication 4 February 2002

## REFERENCES

- 1 Fernandez BB, Hernandez FJ. Amyloid tumour of the breast. *Arch Pathol* 1973;**95**:102–5.
- 2 Walker AN, Fechner RE, Callicott JH. Amyloid tumour of the breast. *Diagnostic Gynaecology and Obstetrics* 1982;**4**:339–41.
- 3 McMahon RFT, Waldron D, Given HF, *et al*. Localised amyloid tumour of the breast, a case report. *International Journal of Medical Science* 1984;**159**:323–4.
- 4 Lew W, Seymour AE. Primary amyloid tumor of the breast. *Acta Cytol* 1985;**29**:7–11.
- 5 Cheung PSY, Yan KW, Alagaratnam TT, *et al*. Bilateral amyloid tumours of the breast. *Aust N Z J Surg* 1986;**56**:375–7.
- 6 Silverman JF, Drabbs DJ, Norris HT *et al*. Localised primary (AL) amyloid tumour of the breast. *Am J Surg Pathol* 1986;**10**:539–45.
- 7 Luo JH, Rotterdam H. Primary amyloid tumour of the breast: a case report and review of the literature. *Mod Pathol* 1997;**10**:735–8.
- 8 Virchow R. Weitere Mitteilungen über das Vorkommen der pflanzlichen Cellulose beim Menschen. *Virchows Arch Pathol Anat Physiol Kin Med* 1854;**6**:268.
- 9 Cotran Ramzi S, Kumar V, Collins T. Diseases of immunity. In: *Robbins pathologic basis of disease*, 6th ed. W B Saunders, 1999:188–259.
- 10 Wright JR, Calkins E, Humphrey RL. Potassium permanganate reaction in amyloidosis, a histological method to assist in differentiating forms of this disease. *Lab Invest* 1977;**36**:274–81.
- 11 Lynch LA, Moriarty AT. Localised primary amyloid tumour associated with osseous metaplasia presenting as bilateral breast masses, cytologic and radiologic features. *Diagn Cytopathol* 1993;**9**:570–5.
- 12 Yokoo H, Nakazato Y. Primary localised amyloid tumour of the breast with osseous metaplasia. *Pathol Int* 1998;**48**:545–8.
- 13 Gupta RK, Dowle CS. Cytodiagnosis of amyloid deposition within the breast. *Cytopathology* 1996;**7**:136–40.
- 14 Gupta D, Shidham V, Zemba-Palco V, *et al*. Primary bilateral mucosa-associated lymphoid tissue lymphoma of the breast with atypical ductal hyperplasia and localised amyloidosis, a case report and review of the literature. *Arch Pathol Lab Med* 2000;**124**:1233–6.
- 15 Santini D, Pasquinelli G, Alberghini M, *et al*. Invasive breast carcinoma with granulomatous response and deposition of unusual amyloid. *J Clin Pathol* 1992;**45**:885–8.



## Primary amyloid tumour of the breast: a case report

M V Deolekar, J Larsen and J A Morris

*J Clin Pathol* 2002 55: 634-635

doi: 10.1136/jcp.55.8.634

---

Updated information and services can be found at:

<http://jcp.bmj.com/content/55/8/634.full.html>

---

### References

*These include:*

This article cites 11 articles, 1 of which can be accessed free at:

<http://jcp.bmj.com/content/55/8/634.full.html#ref-list-1>

Article cited in:

<http://jcp.bmj.com/content/55/8/634.full.html#related-urls>

### Email alerting service

Receive free email alerts when new articles cite this article. Sign up in the box at the top right corner of the online article.

---

### Notes

---

To request permissions go to:

<http://group.bmj.com/group/rights-licensing/permissions>

To order reprints go to:

<http://journals.bmj.com/cgi/reprintform>

To subscribe to BMJ go to:

<http://group.bmj.com/subscribe/>